

## UNHCR IDP Operation in the Democratic Republic of Congo

Update 7 November 2008

### Introduction

Since August, fighting in eastern DRC has displaced an estimated 250,000 persons in North Kivu alone, 50,000 to 100,000 persons in Province Orientale and caused an influx of over 14,000 refugees into Rwanda, Sudan and Uganda. The main areas affected by forced displacement are Rutshuru, Masisi, Goma and its surroundings in North Kivu province, Dungu and Irumu in Province Orientale and Kalehe in South Kivu province.

In late October, General Nkunda's CNDP (*Le Congrès National pour la Défense du Peuple*) advanced towards Goma causing the displacement of more than 50,000 persons, mainly from Rugari and Kibumba IDP sites towards Kibati. There are currently over 65,000 IDPs living in the two Kibati camps bringing the total population in the six IDP sites around Goma to 136,000.

In early November, several IDP camps, including UNHCR-assisted Nyongera, Kasasa and Dumez camps, near the North Kivu town of Rutshuru, some 90 kilometres north of Goma, were forcibly emptied, looted and burned. Some 50,000 IDPs living in these camps have moved out, some towards Kanyabayonga, some towards Ishasha and Uganda, while others joined friends and relatives in neighbouring villages or tried to return to their homes.

In recent days, the security and humanitarian situation in Dungu (Province Orientale) further deteriorated following a second attack by the Lord's Resistance Army on the city resulting in large population displacements.

The unilateral ceasefire declared by General Nkunda on 31 October was breached on 4 November with heavy fighting in Kinwanja, near Rutshuru between CNDP and local defence

militias. The situation in Goma is calm but tense with CNDP forces located some 13 kilometres from the city. More worrying is the situation in Kibati. UNHCR fears that the civilian population, already in a desperate humanitarian situation, could be caught in the crossfire should fighting resume in the area



*Destroyed IDP site in Nyongera, near the North Kivu town of Rutshuru. UNHCR/A. Murru*

### UNHCR response in eastern DRC

#### North Kivu

The Office is constructing five large temporary shelters for newly displaced families in Kibati. UNHCR has begun the registration of some 50,000 IDPs in Kibati camps. Some 100 cases of diarrhoea have been reported. To prevent a possible cholera outbreak, and pending WFP food distribution, UNHCR distributed 100,000 soap tablets and 28,000 jerry cans to some 15,000 IDPs in Kibati on 3 November.

On 3 November, UNHCR participated in the inter-agency mission that went to Rutshuru to assess the conditions of IDPs and confirmed that three sites around Rutshuru had been destroyed. The mission was unable to assess the situation in three other sites due to fighting.

## Province Orientale

In Irumu, there are reportedly 22,000 new IDPs. UNHCR and its partners are working to address protection problems, including looting and sexual and gender-based violence.

UNHCR does not yet have access to Dungu due to the security constraints but stands ready to assess the situation whenever possible.



*Tens of thousands of displaced Congolese have fled to the North Kivu provincial capital, Goma. MONUC/M. Frechon*

## Ongoing and planned activities in eastern DRC

UNHCR is leading the protection cluster and the camp coordination and camp management (CCCM) mechanism and is working closely with all humanitarian partners to ensure implementation of humanitarian activities in IDP sites and settlements.

**Protection:** Access to affected populations is extremely difficult. UNHCR fully supports the U.N. Secretary-General's call for an immediate halt to fighting in eastern DRC amid growing concerns over tens of thousands of displaced civilians. As protection cluster lead, UNHCR has been advocating for the establishment of a demilitarized zone in and around Kibati so that the protection of civilians can be guaranteed and humanitarian assistance delivered. UNHCR is increasing protection monitoring (subject to safe access) in order to assess and follow up individual and collective protection needs in IDP sites and settlements. The intervention of

UNHCR and its partners focuses particularly on the prevention of sexual and gender-based violence and the provision of support and care to victims. The prevention of recruitment of children notably unaccompanied minors as well as tracing and arranging foster care for the latter is another priority. Furthermore, protection cluster will update contingency plans, focusing on protection of civilians in hot spots (Kibati, Goma, Kinyandoni, Nyanzale, Masisi).

**CCCM:** UNHCR is working to extend existing sites and create new sites to accommodate arriving IDPs. The Office is also registering IDPs to facilitate the distribution of assistance and to gather protection information on the forcibly displaced persons.

**Non-food items:** At the request of and in coordination with the shelter and non-food items cluster. UNHCR will distribute non-food relief items for up to 250,000 beneficiaries as soon as the Office has access to the displaced. The initial distribution of non-food items (including plastic sheeting, kitchen sets and jerry cans) will begin on 10 November following WFP's food distribution with the aim to initially target some 136,000 IDPs currently hosted in the six camps run by UNHCR around Goma.

## UNHCR response in neighbouring countries

Over 10,500 Congolese sought refuge in **Uganda** since August, including 3,000 who arrived last week. UNHCR has established a presence in both Kanungu and Kisoro District on 1st of November to monitor the situation and respond to the emergency, in coordination with the governmental authorities, NGO partners and UN sister agencies. UNHCR and the Government of Uganda started a mass information campaign to inform the refugees about their rights, the assistance available for them in Nakivale and to sensitize them, in cooperation with UNICEF, on hygiene practices to avoid outbreaks of cholera. A regular transportation system has been established for those refugees willing to be transferred to Nakivale refugee settlement. Out of the 10,500 refugees, 3,000 persons have already been transferred to Nakivale settlement and others are

dispersed in villages along the Ugandan border with the DRC.

In **Rwanda**, some 40 persons have approached UNHCR and are currently staying in a transit centre.

Recent fighting has caused the arrival of an estimated 3,500 refugees into Southern **Sudan**. Assessments in Sakure and Gangura (Yambio State) are underway and some 2,400 refugees have already been registered. UNHCR is coordinating the relief effort with local actors.

<b>Revised Supplementary Budget Requirements for 2008</b>	
<b>Sectors</b>	<b>USD</b>
Protection, monitoring and coordination	6,069,491
Community services	1,100,000
Domestic and household goods	4,000,000
Education	800,000
Health and nutrition	800,000
Income generation	2,000,000
Legal assistance	4,000,000
Operational support (to agencies)	2,944,297
Sanitation	400,000
Shelter and other infrastructure	3,000,000
Transport and logistics	2,800,000
Water	500,000
<b>Total Operations</b>	<b>28,413,788</b>
Support costs (7%)	1,988,965
Programme Support	93,975
<b>Grand Total</b>	<b>30,496,728</b>

## **Funding requirements**

The current emergency needs are met through a reallocation of budget within the existing USD 30.5 million Supplementary Programme for Congolese IDPs. As funds available in 2008 for this programme are currently at USD 17.8 million, the Office requires **USD 12.7 million** to continue implementing planned activities as well as to provide protection and assistance to newly displaced IDPs in eastern DRC. Current Supplementary Programme requirements for 2009 are USD 22.9 million.

In addition, UNHCR will require some **USD 2-3 million** to provide protection and assistance to new refugees from the DRC in Uganda and Southern Sudan. No additional funds are required for Rwanda considering the small number of new arrivals.

<b>Supplementary Programme Funding Overview as of 31 October 2008</b>	
<b>Sectors</b>	<b>USD</b>
Canada	1,022,495
Germany	1,168,224
European Commission	738,552
Japan	4,118,272
Turkey	75,000
United States of America	6,160,000
CERF	1,351,803
Pooled Fund for DRC	322,000
Private donors - Japan	194,685
Carry over from 2007	2,111,079
Transfers and other income	498,882
<b>Grand Total</b>	<b>17,760,992</b>

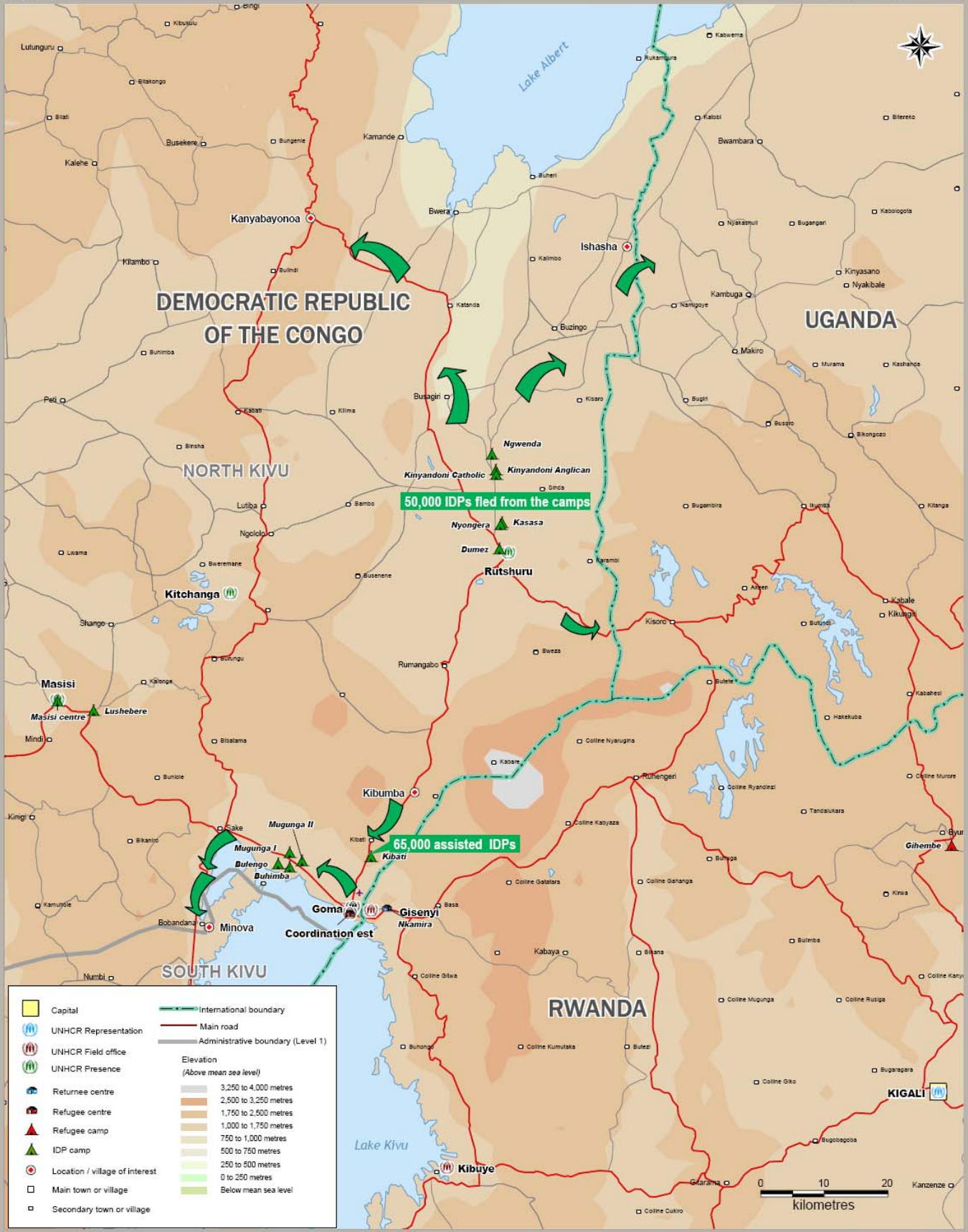
# Democratic Republic of the Congo North Kivu - Goma area

As at 6 November 2008

**FIGSS**  
Field Information and  
Coordination Support Section  
Division of Operational Services

Sources:  
UNHCR, Global Insight digital mapping  
© 1998 Europa Technologies Ltd.  
Situation Report - Goma - 04 Nov 08

The boundaries and names shown  
and the designations used on this  
map do not imply official endorsement  
or acceptance by the United Nations.



**DEMOCRATIC REPUBLIC OF THE CONGO**

**UGANDA**

**NORTH KIVU**

**RWANDA**

**SOUTH KIVU**

**KIGALI**

50,000 IDPs fled from the camps

65,000 assisted IDPs

	Capital		International boundary
	UNHCR Representation		Main road
	UNHCR Field office		Administrative boundary (Level 1)
	UNHCR Presence	Elevation (Above mean sea level)	
	Returnee centre		3,250 to 4,000 metres
	Refugee centre		2,500 to 3,250 metres
	Refugee camp		1,750 to 2,500 metres
	IDP camp		1,000 to 1,750 metres
	Location / village of interest		750 to 1,000 metres
	Main town or village		500 to 750 metres
	Secondary town or village		250 to 500 metres
			0 to 250 metres
			Below mean sea level